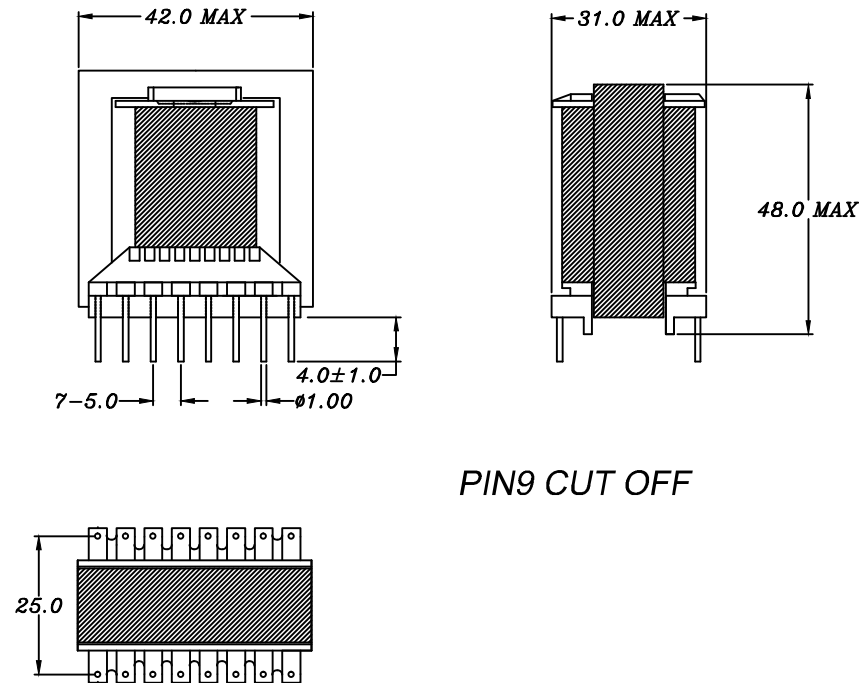


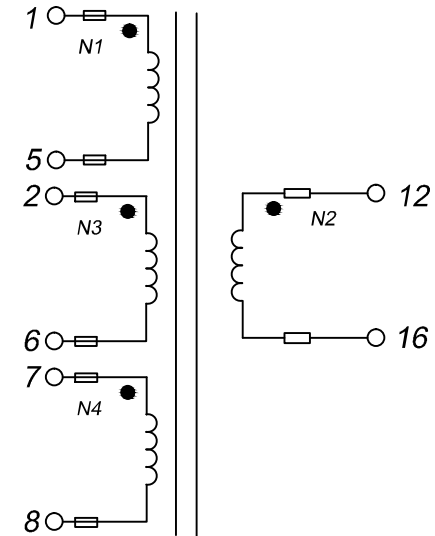
CUSTOMER TERMINAL	ROHS	Lead (Pb) -free
	YES	YES



### 1.Mechanical Dimensions(Unit:mm)



### 2.Schematic Diagram



### 3.Material List

Core:FW40-ETD3942  
 Bobbin: FWB3971-J 8+8PIN  
 Wire:2UEW  
 Tapes:polyester film Varnish: T-4260(a)  
 Tube:TFL tube

### 4.Electrical Specification

Inductance:  $L(1-5)=330\mu H \pm 10\%$  100KHZ 1V  
 Hi-pot: Pri to Sec AC 50HZ 4000V3mA60SEC  
 N1,N3 to N4 AC 50HZ 1000V3mA60SEC

REV.	DATE	 Convention Placement	DRW.	Drawing Title: <b>TRANSFORMER</b> Customer P/N:	Part No:
0	03/20		CHK.		FWPTETD39V331K
<b>RoHS</b>		<a href="http://www.ferriwo.com">www.ferriwo.com</a>	APP.		Specification Sheet 1 of 1